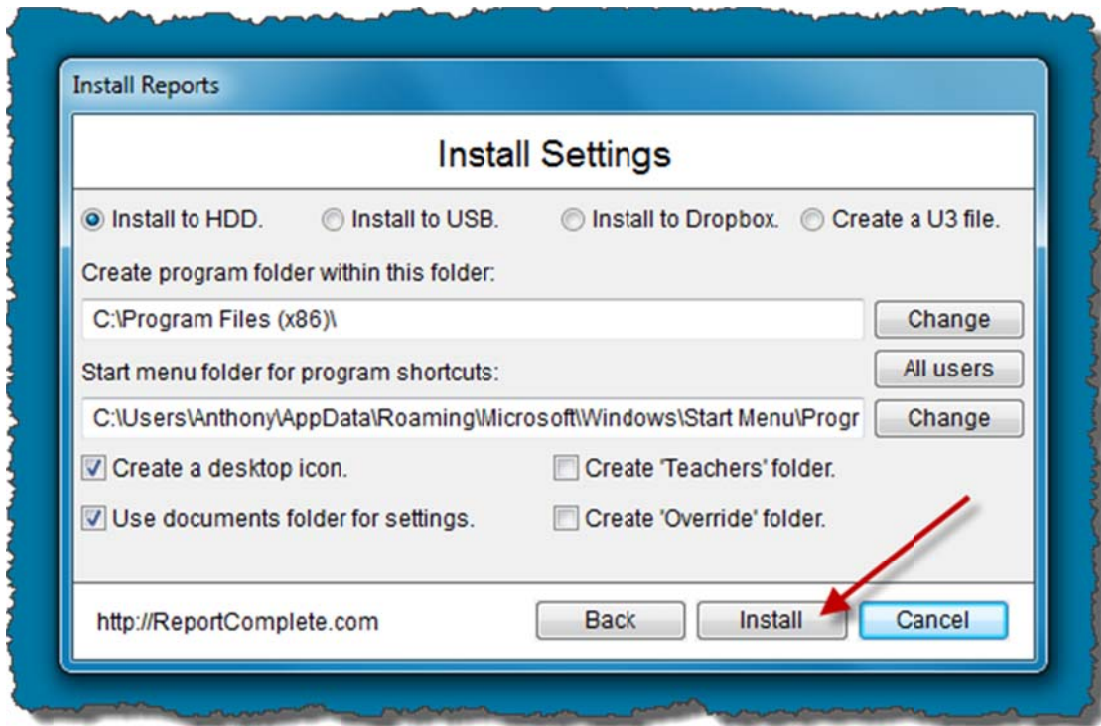


Custom Install

If you choose to make a custom install then you will see a screen with four main options...



1. Install to HDD (Hard drive):

With this option you can change main folder locations used to start the program and turn on/off various install settings.

a) Create 'Teachers' folder:

This will put the program in Alternative Network Mode. Normally you would change the program folder to a shared drive e.g. Z:\ that the users have full access rights to (save, load, create folders, etc.) then put a shortcut to the ReportComplete program on each user's desktop. If the user runs ReportComplete via this shortcut, a folder will be made underneath the 'teachers' folder (in the program folder on the shared drive e.g. Z:\), named after the Windows username of the user. All their files will be stored in that folder. With this type of install the program only needs to be installed once, on the shared drive.

b) Create 'Override' folder:

This will put a folder called Override on the C:\ drive of the computer. The user should be given full rights to this folder (this is normally the case). When ReportComplete is started it will look for this folder, if found it will be used for saving and loading all data (rather than MyDocuments\ReportComplete). The override folder system was created to prevent users of laptops that are synchronised to networks from losing work due to user error or incorrect network settings – the files just stay on the computer.

2. Install to USB (PortableApps):

Use this option to install to any memory sticks that have the PortableApps menu system installed. Don't worry if you don't know what PortableApps is, if it isn't found the you will be prompted to find the memory stick and a launcher called Start ReportComplete will be installed along with the ReportComplete program. Use this launcher to start ReportComplete from memory stick. For more information about PortableApps, see <http://PortableApps.com>

3. Install to Dropbox:

For details, download the Dropbox.pdf in the resources section of our website: <http://ReportComplete.com>

4. Create a U3 file:

Use this option to make a special file that a U3 memory stick can use to install. Once created, use the U3 system menu to install the file to the stick. Most people with U3 smart sticks will use the custom U3 installer we provide on our website rather than this option.